

November 1, 2022

Dear Park View Resident:

In preparation for the reconstruction of multiple residential streets & stormwater improvements, MSA Professional Services will be conducting a topographic survey of the certain areas of Park View subdivision over the next few weeks. Please find the anticipated survey limits on the back of this notification.

In preparation for the work, Iowa One-Call has been notified & existing utilities have been marked. Residents might notice paint markings and flagging that identify existing utilities (storm pipes, sewer mains, water services, etc.). These markings are used to identify potential utility conflicts and assist in the design of the improvements. Please leave these markings and flags undisturbed.

Additionally, residents might notice some minor excavation completed by the surveyors to find property corners, ROW markers, buried water shut-offs, etc. Finding these existing features are vital to the proper design and planning of the project. Please note that the disturbance will be kept to the absolute minimum to avoid any unnecessary impact to property owners.

Lastly, residents might notice surveyors in certain backyards. Please do not be alarmed as the gathering of data for the existing drainage ways & storm sewer system is also necessary to support the engineering design and planning of the roadway and stormwater improvements.

Should residents have any concerns or questions, please feel free to contact the Scott County Engineer.

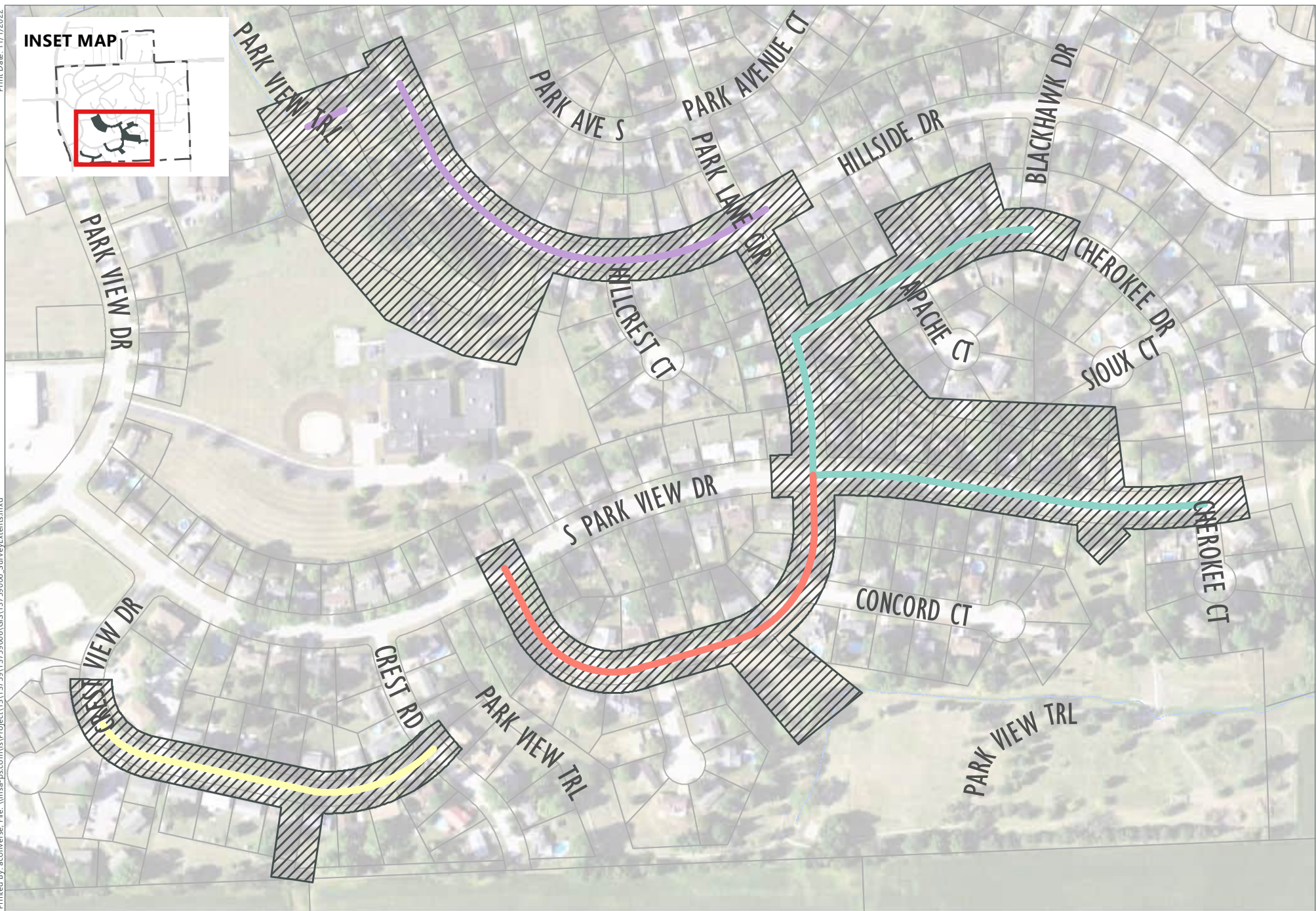
Scott County Engineer

Angela Kersten

P: (563) 326-8640

engineer@scottcountyiowa.gov





Major Project Areas C

A

B

D

Survey Extents

Survey Extents

Road Reconstruction with Stormwater Improvements
Park View, Scott County, IA